

Table 1: Shows updated SARS-CoV2 infection status as on 17 April 2020 [26].

Sr. no.	Reported Cases/ Affected Regions	Number
1	Confirmed	2,078,605
2	Deaths	139,515
3	Number of Affected Countries, territories or areas	213

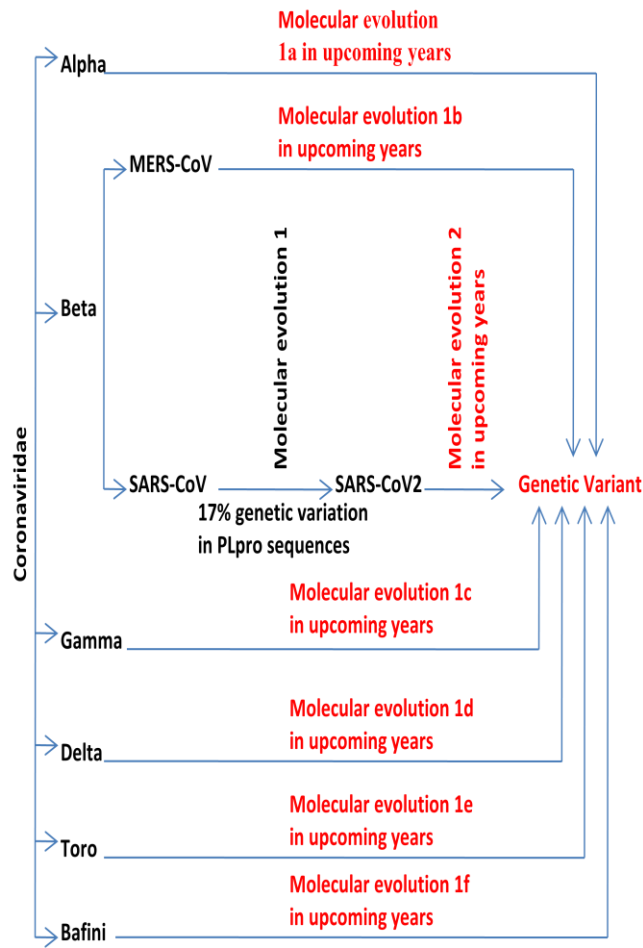


Figure 1: Schematic representation of the predicted evolution of Coronaviridae members with probable effects on human health. Note: 1a, 1b, 1c, 1d, 1e, 1f represent predicted evolutionary pathway of alpha, gamma, delta, toro and bafini viruses, respectively.

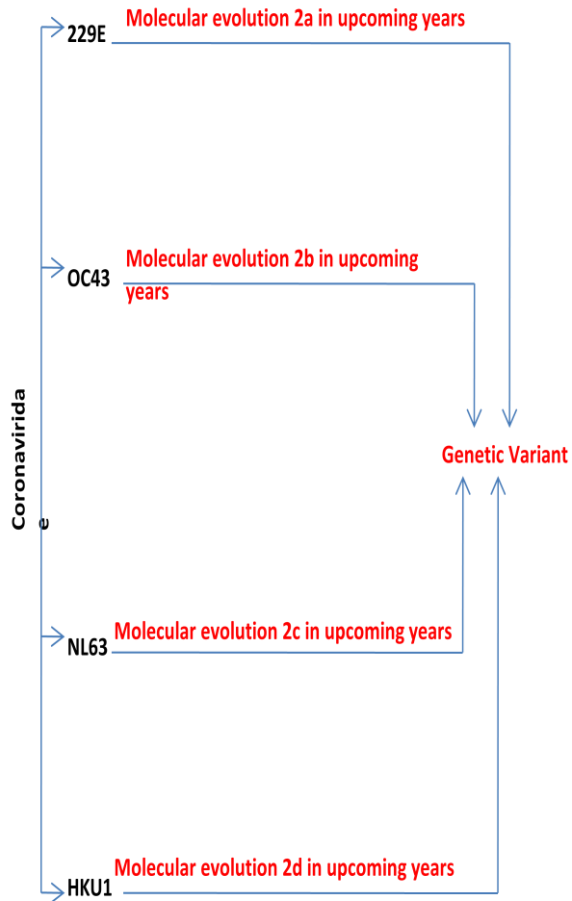


Figure 2: Schematic representation of the predicted evolution of Coronaviridae members with probable effects on human health. Note: 2a, 2b, 2c, 2d represent predicted evolutionary pathway of 229E, OC43, NL63, HKU1 viruses, respectively.